

ESPRIT CAM SYSTEM FOR CITIZEN

A Citizen Machinery Preferred CAM Solution

Citizen and DP Technology have collaborated technically in response to increasing demand from users who desire software that yields better production value and greater machining utilization. The result is a CAM solution that streamlines operations on the shop floor and simplifies the programming process. Citizen and DP Technology continue ongoing development to maintain a suite of post processors and machining configurations within ESPRIT to support the full line of Citizen machine tools.

The ESPRIT® CAM System for Citizen Includes:

- ESPRIT® SolidTurn® Production for multi-spindle and multi-turret Swiss-style turning
- SolidMillTurn® Advanced for C- and Y-axis milling
- Synchronized, synchronous and independent multi-axis turning
- Full suite of machining cycles including: roughing, contouring, drilling, pocketing, grooving, facing, threading and more...
- Part handling cycles including: barfeed, rechucking, part transfer and cut-off
- Machine specific user interface for Citizen
- Factory certified post processing for Citizen
- Solid simulation and verification for Citizen
- And more as outlined in the ESPRIT General Specifications

ESPRIT includes functions specific to and customized for Citizen Swiss-style lathes, including a custom Citizen machine set-up interface with machine data pages for L, M, A, C, E, R, K and B-series Citizen machine tools; a custom cutting tool interface that manages tool shifts and Citizen tool holders; accurate machine simulation with embedded machine models and post processors for Citizen lathes.

dptechnology.com/citizen

CONTACT US

Corporate Offices
1150 Avenida Acaso
Camarillo, CA 93012
USA

Tel: +1 (805) 388-6000
Fax: +1 (805) 388-3085
Toll Free: (800) 627-8479

dptechnology.com
esprit@dptechnology.com

Midwest USA
1001 E. Touhy Ave
Suite #300
Des Plaines, IL 60018

Tel: (847) 297-8100
Fax: (847) 297-8107

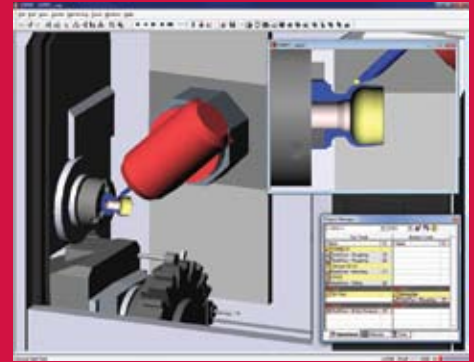
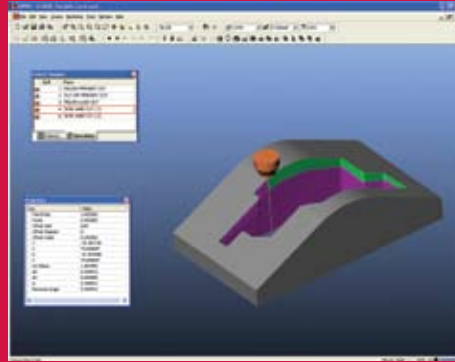
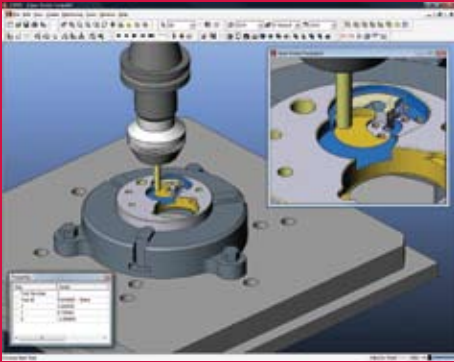
East USA
8535 Cliff Cameron Drive
Suite #112
Charlotte, NC 28269

Tel: (704) 594-9551
Fax: (704) 594-9802

CITIZEN
Micro HumanTech



The Right Choice



ESPRIT is a high-performance computer-aided manufacturing (CAM) system for a full range of machine tool applications.

ESPRIT's high-performance capabilities include machining any part geometry (solid, surface, or wireframe), universal post processing to format G-code for virtually any machine tool, and solid simulation and verification with dry runs rendered in dynamic solids for optimal part quality and consistency. ESPRIT is 100% pure Windows®, and provides a comfortable and familiar user interface for maximum productivity.

ESPRIT for Citizen is a member of the ESPRIT family of CAM software which also includes powerful, full-spectrum programming for:

- 2-5 axis milling*
- 2-22 axis turning
- 2-5 axis wire EDM*
- Multitasking mill-turn machining
- B-axis machine tools*
- High-speed 3- and 5-axis machining*

*Available as an upgrade to the ESPRIT for Citizen system.

U.S. Patents 6,907,313; 7,058,472
Other U.S. and foreign patents pending.

© 2008 DP Technology Corp.
All Rights Reserved

ESPRIT for Citizen General Specifications

- Machining and modeling of any part geometry powered by
 - Parasolid® solid modeler
 - ACIS® solid modeler
 - NURBS surface modeler
 - STL modeler**
 - 2D/3D wire frame modeler
 - Drawing, dimensioning, and annotation
- Universal post processing
 - Factory certified for Citizen
- Solid simulation and verification
 - Dry runs in dynamic solids
 - Rendered within the complete machining environment: machine tool, fixtures, stock, and workpiece
 - Exhaustive collision detection: tool, stock, fixtures, and workpiece
 - “As-machined” versus “as-designed” part inspection
- 100% pure Windows® application
 - Designed for:
 - Microsoft Windows® XP and Windows® Vista
 - Microsoft® SQL Server™
 - Integrates with Microsoft® Office for shop-floor documentation
 - Dynamic graphics delivered by OpenGL®
 - Customizable user interface, toolbars and menus
 - HTML-based context-sensitive online help
- Adaptive machining cycles
 - Adapts to varying part geometry
 - Automates engineering changes and part families
 - Extensive tool control
- Microsoft® Visual Basic® for Applications (VBA)
- ESPRIT Component Object Model (COM)-based Application Programming Interface (API)
- Automated Feature Recognition
- High-speed machining and G-code optimization
- G-Code text editor and DNC RS232 communication program
- Network floating licenses**
- Data Exchange
 - ESPRIT reads data from the following native formats: ACIS® (SAT), AutoCAD (DWG), CSV, DXF™, Autodesk Inventor®, IGES, Mechanical Desktop®, Parasolid® (X_B, X_T), Solid Edge®, SolidWorks®, TXT, VDA-FS. Optional data readers are available for: CATIA®, Pro/ENGINEER®, Unigraphics®, STEP, STL.
- Local Language Support
 - Chinese (PRC), Chinese (Taiwan), Czech, English, French, German, Italian, Japanese, Korean, Polish, Spanish, Swedish, and Turkish.

Note: **Optional component

dptechnology.com/citizen



The Right Choice

Los Angeles | Chicago | Charlotte | Tokyo | Shanghai | Montpellier | Florence | Nuremberg